

OTSM MODELS IN THE SOLVING MILL PROGRAM

Nikolay Shpakovsky

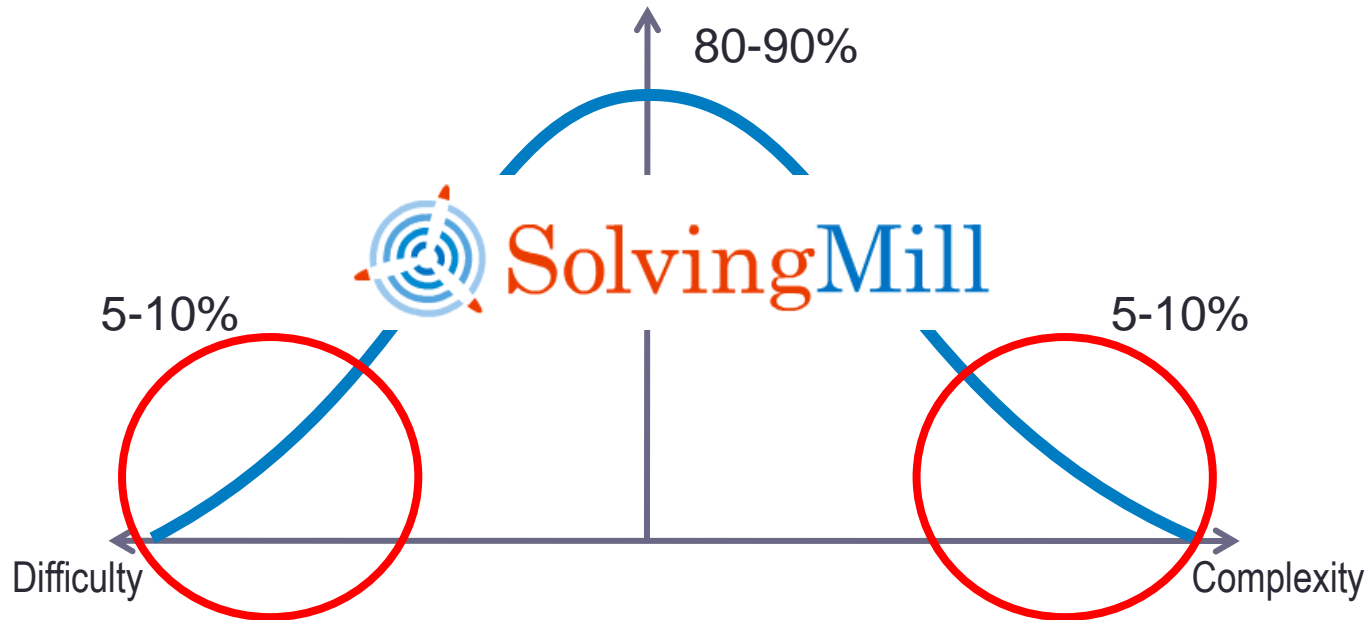
Target Invention / triztrainer@mail.ru

Elena Novitskaya

Target Invention / sym_al@mail.ru

Why need Solving Mill software program

Solving Mill intended for improving the Problem Situation with one undesired effect



Distribution of projects at company

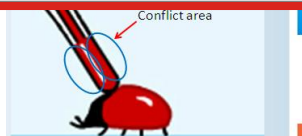
Structure of the Solving Mill



Main level.

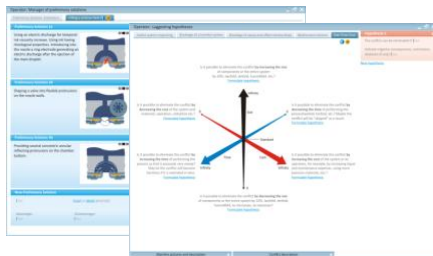
The template for problem solving

Point out when the conflict interaction starts and ends. Is it permanent or manifests itself periodically? Does it coincide with the beginning of the machine work?



1-st supporting level.

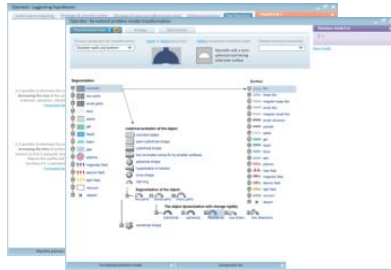
Prompting for cells



2-d supporting level.

Operators to fill the template for problem solving

Structure of the Solving Mill



3-d supporting level.

Helps how to use the template and the operators for problem solving



4-th supporting level.

Case studies of samples of resolved problems



5-th supporting level.

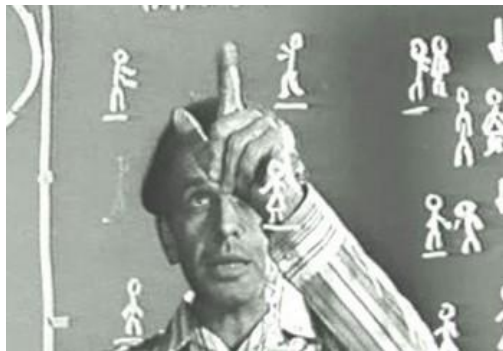
E-learning course about Algorithm of Improving Problem Situation

Structure of the Solving Mill

Solving Mill structure is a matrix

5. E-course						
4. Case studies						
3. Helps						
2. Operators						
1. Prompting						
0. Template						
	Step 1	Step 2	Step 3	Step 4	Step N

Basic of the Solving Mill



Classical TRIZ



OTSM



Problem solving experience

Algorithm Improving of Problem Situation



Nikolay Khomenko



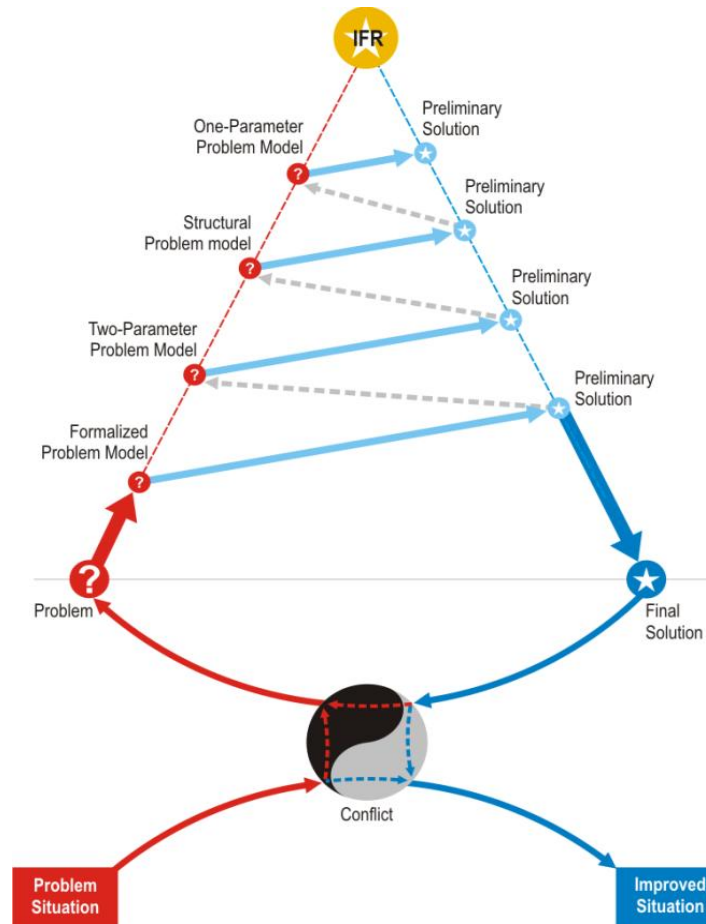
Nikolay Shpakovsky



Vasily Lenyashin

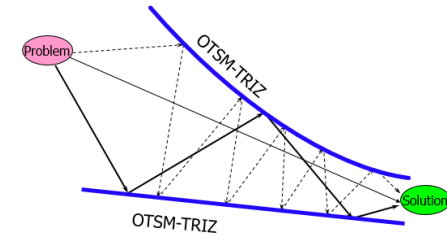


Elena Novitskaya

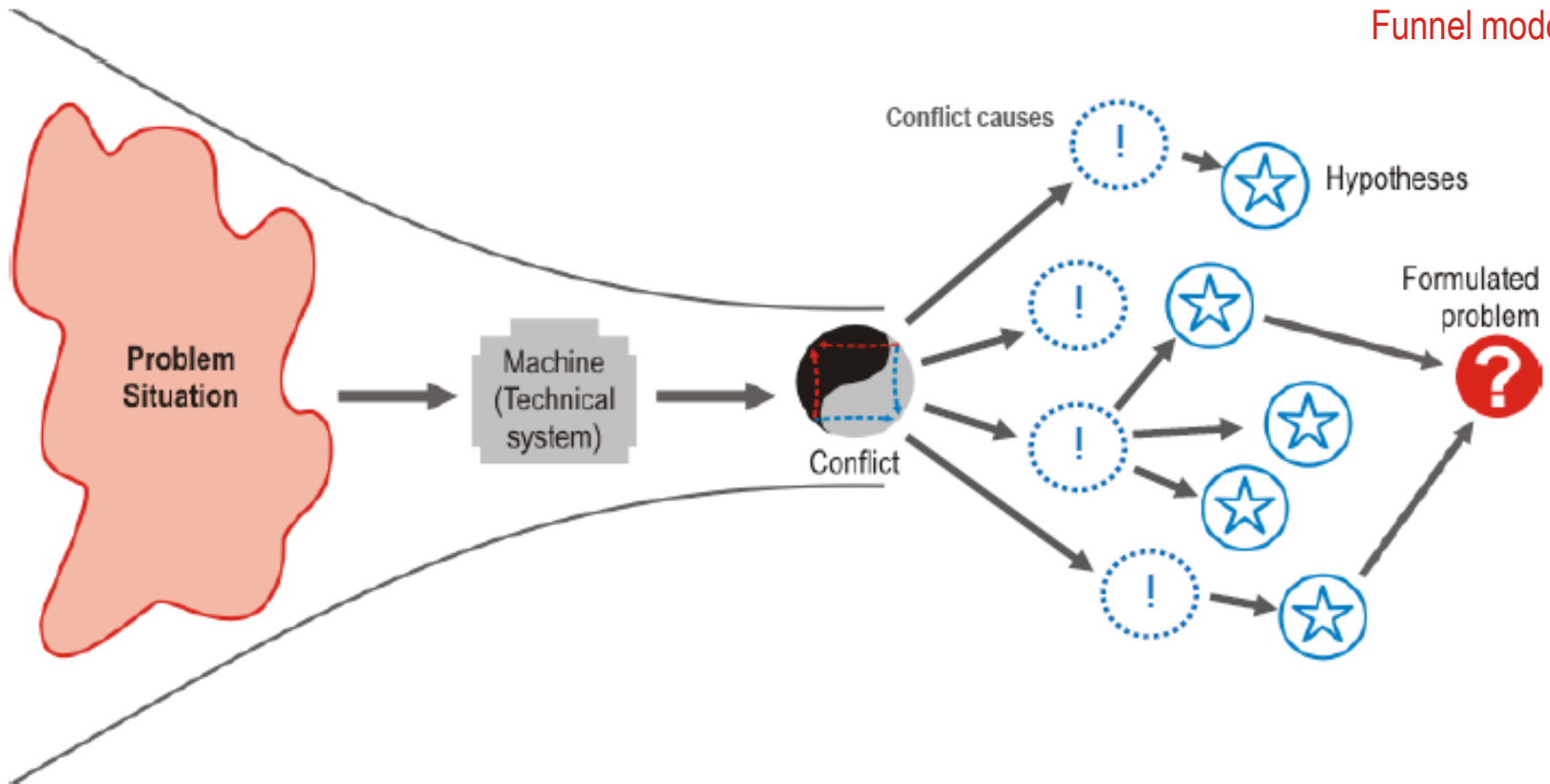


Models of OTSM used in the Solving Mill

Technology of analysis of Problem Situation

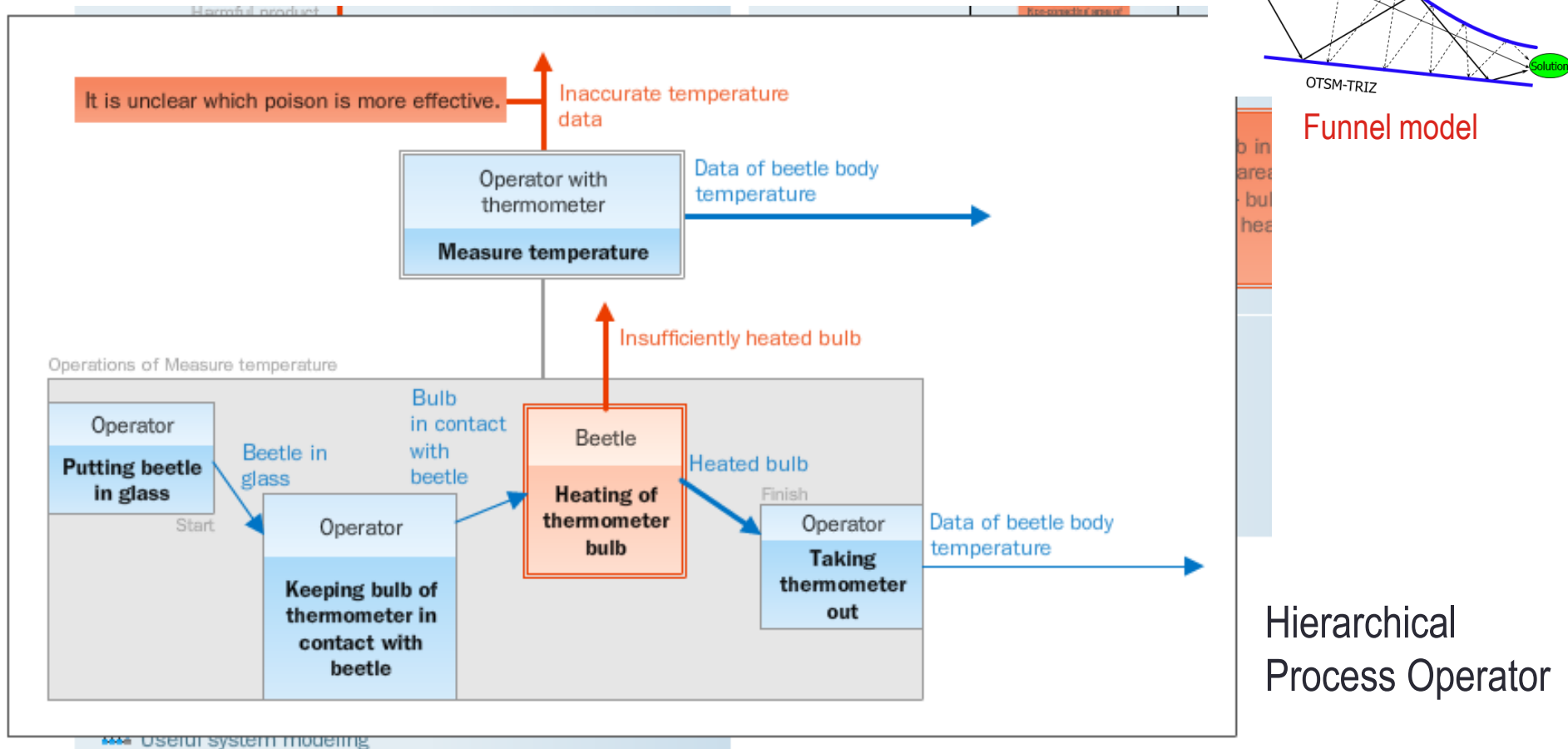


Funnel model



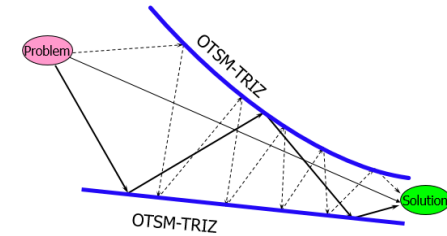
Models of OTSM used in the Solving Mill

Technology of analysis of Problem Situation



Models of OTSM used in the Solving Mill

Technology of the Problem Solving

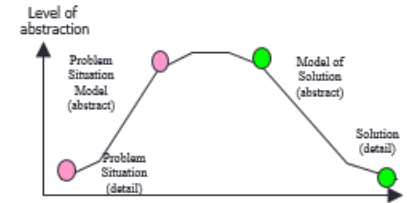
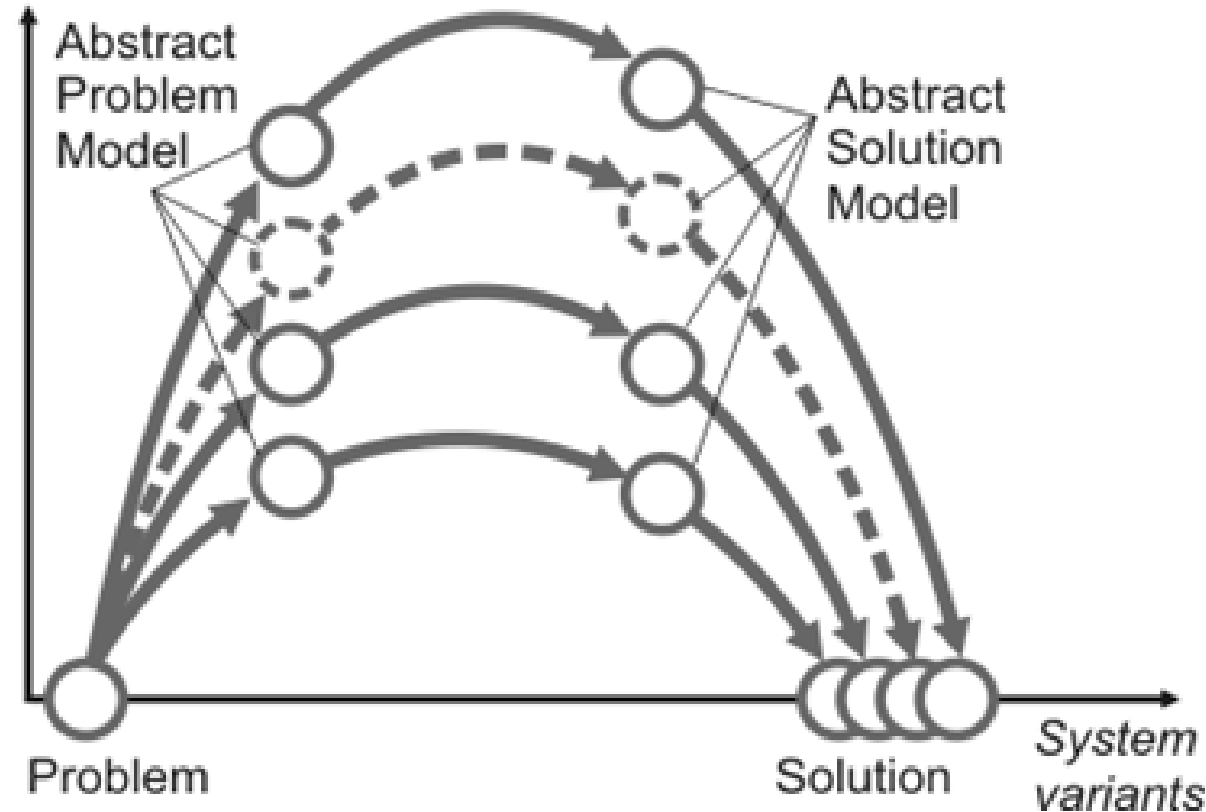


Funnel model

Narrowing of Search Field

Models of OTSM used in the Solving Mill

Level of abstraction

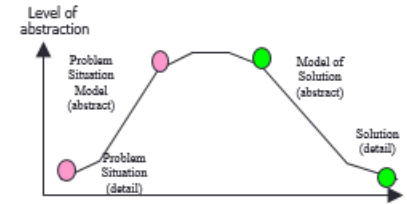


Hill scheme

Multi-hill scheme

Models of OTSM used in the Solving Mill

Technology of the Problem Solving



Hill scheme

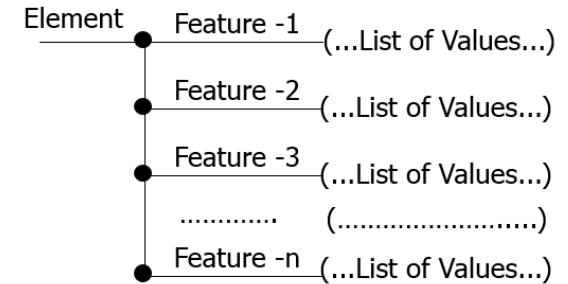
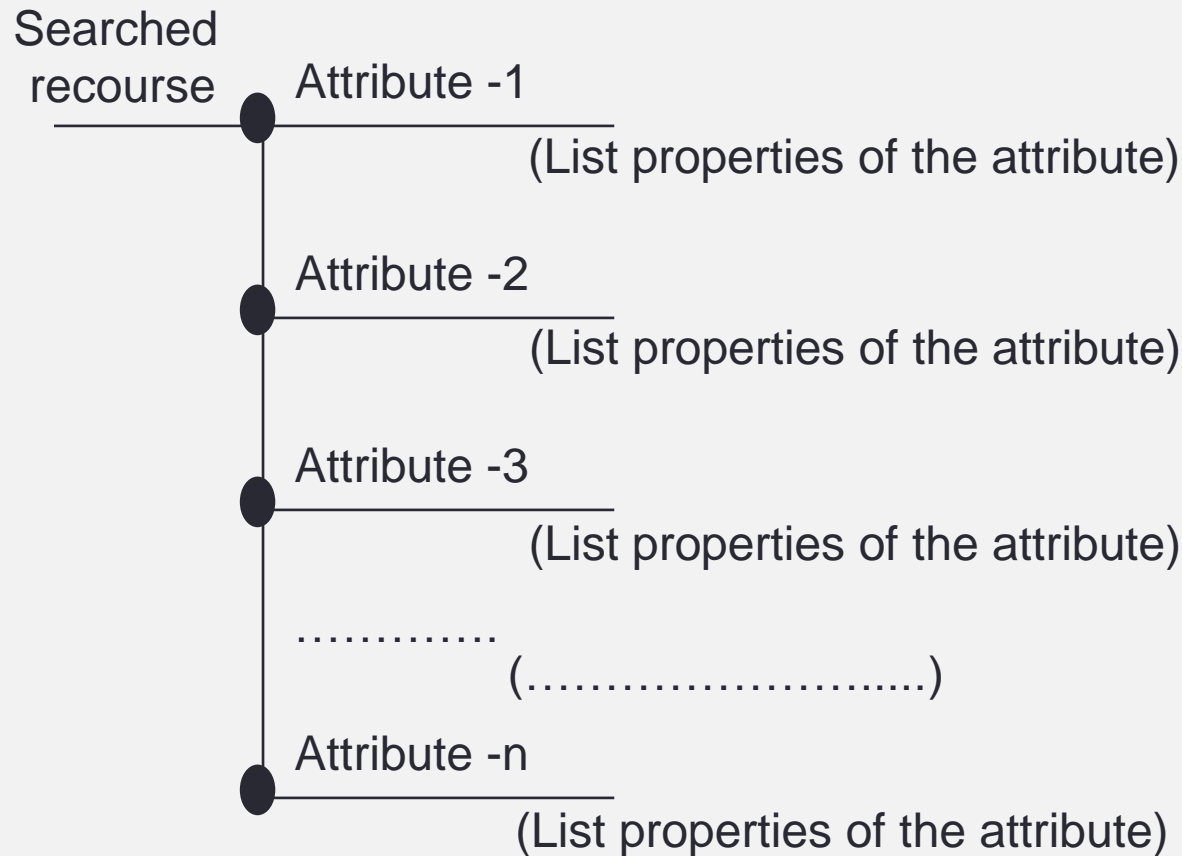


- Formalized problem model
- Two-parameter problem model
- Structural problem model
- One-parameter problem model

Typical Models of Problem in the Solving Mill

Models of OTSM used in the Solving Mill

Technology of the Problem Solving

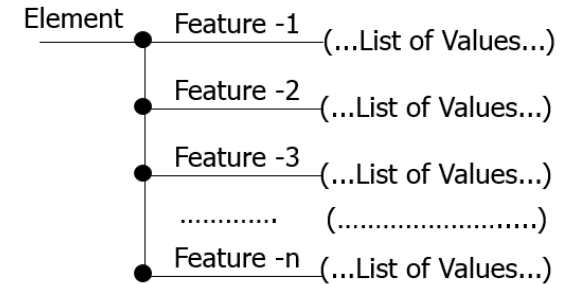
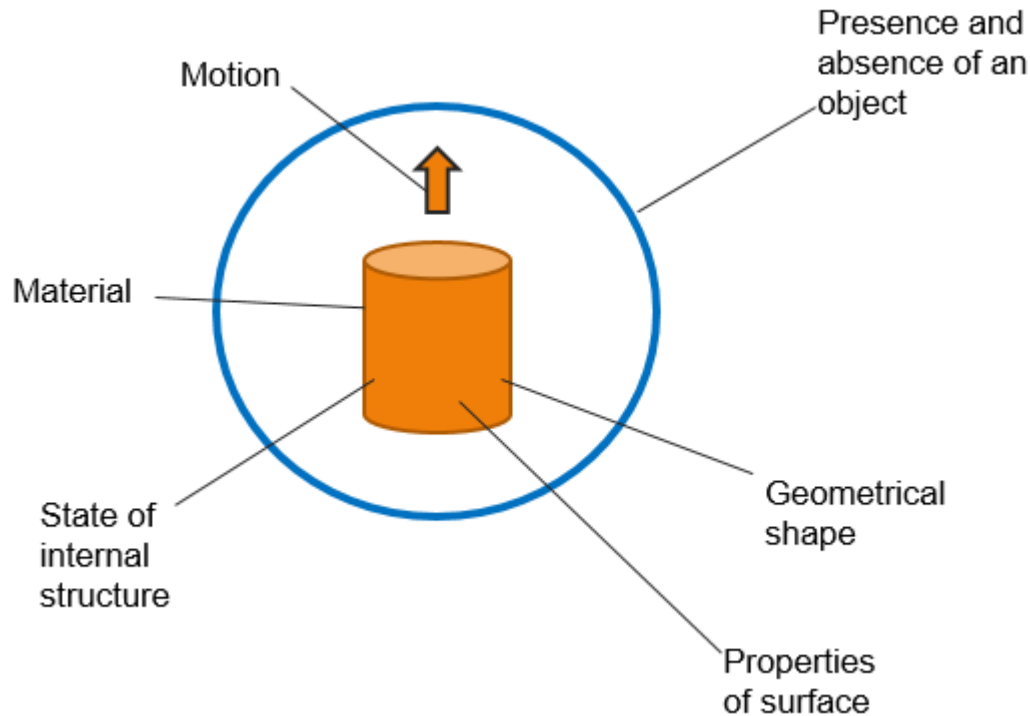


Model "Element-Feature-Value of Feature"

Attributive approach to search of Recourses

Models of OTSM used in the Solving Mill

Technology of the Problem Solving

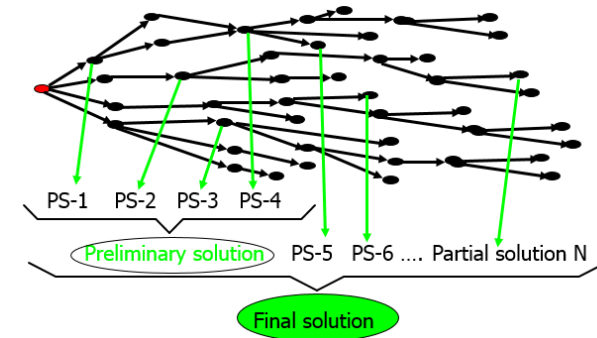


Model "Element-Feature-Value of Feature"

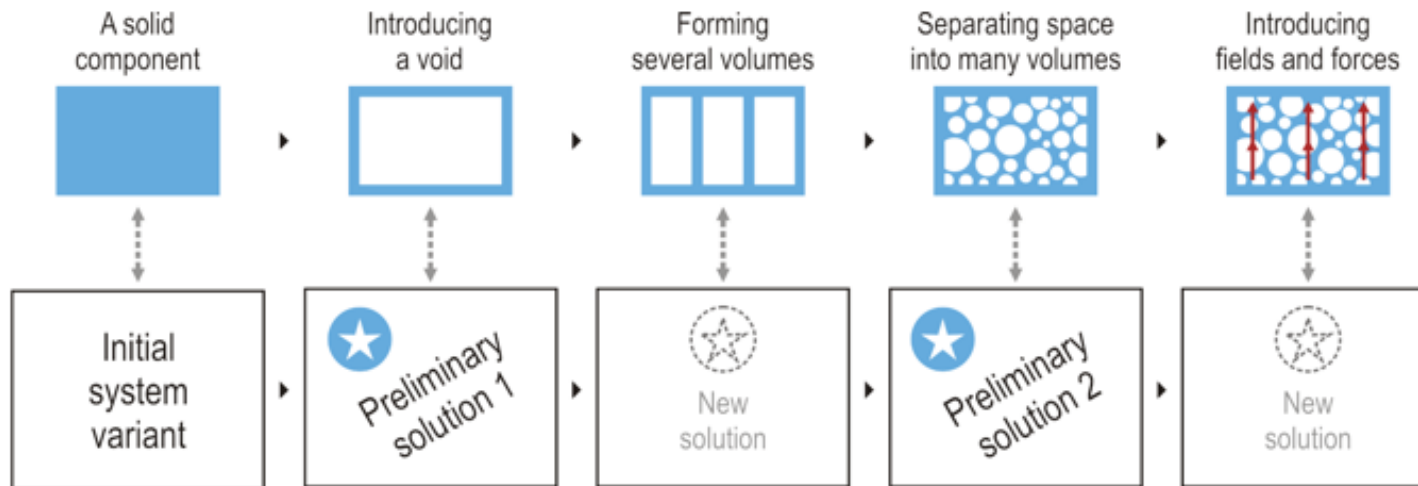
Main attributes of material component

Models of OTSM used in the Solving Mill

Technology of the Problem Solving



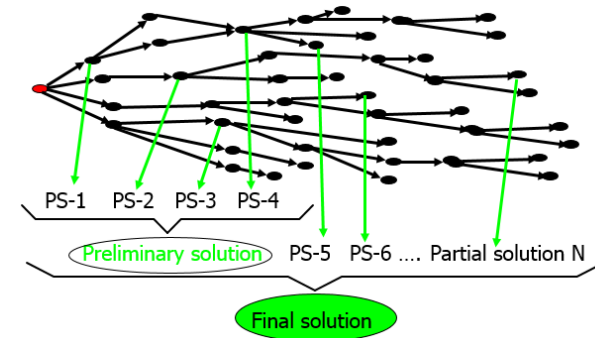
“Problem flow” technology



Filling of Solution Field

Models of OTSM used in the Solving Mill

Technology of the Problem Solving



“Problem flow” technology

Construction of Final Solution

Thank you
for your attention!

Nikolay Shpakovsky, Elena Novitskaya

www.target-invention.com

www.solving-mill.com

info@target-invention.com

www.gnrtr.com

triztrainer@mail.ru

Target Invention